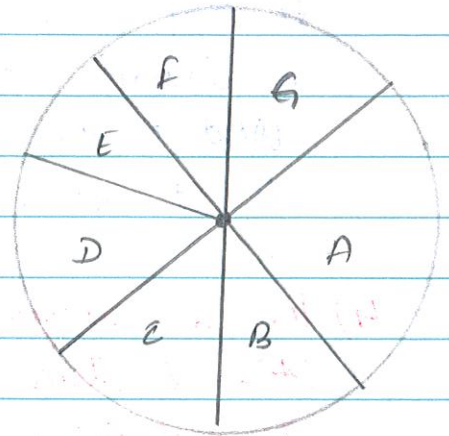


## Chapter 5: Data Handling

1) Adjoints pie chart gives the expenditure (in %) on various items and savings of a family during a month.



A = Food - 25% , B = Cloths - 10%.

C = Savings - 15% D = Other (20%) E = Transport (5%)

F = House rent (10%) G = Education for children (15%)

(i) On which item, the expenditure was maximum?

(ii) Expenditure on which item is equal to the total savings of the family?

(iii) If the monthly savings of the family is Rs. 3000, what is the monthly expenditure on cloths.

2) On a particular day, the sales (in rupees) of different items of a baker's shop are given below:

Ordinary bread	: 320
Fruit bread	: 80
Cakes and pastries	: 160
Biscuits	: 120
Other	: 40
<u>Total</u>	<u>720</u>

Draw a pie chart for the data.

3) A bag has 4 red balls and 2 yellow balls. A ball is drawn from the bag without looking into the bag. What is the probability of getting a red ball? Is it more or less than getting a yellow ball?

4) In a survey of 200 women, it was found that 142 of them like coffee while all others dislike. Find the probability that a woman chosen at random  
 a) like coffee b) dislikes coffee.

5) The data on weights (in kg) of 40 students of a class are:

38, 39, 40, 32, 49, 42, 49, 54, 47, 30  
 42, 40, 29, 45, 28, 53, 38, 40, 43, 45  
 37, 41, 31, 39, 27, 42, 26, 54, 44, 44  
 37, 47, 33, 44, 42, 52, 39, 39, 35, 43

(i) Using tally marks, make a frequency table with one of the intervals as 35-40.

(ii) Draw a histogram for the above frequency table.

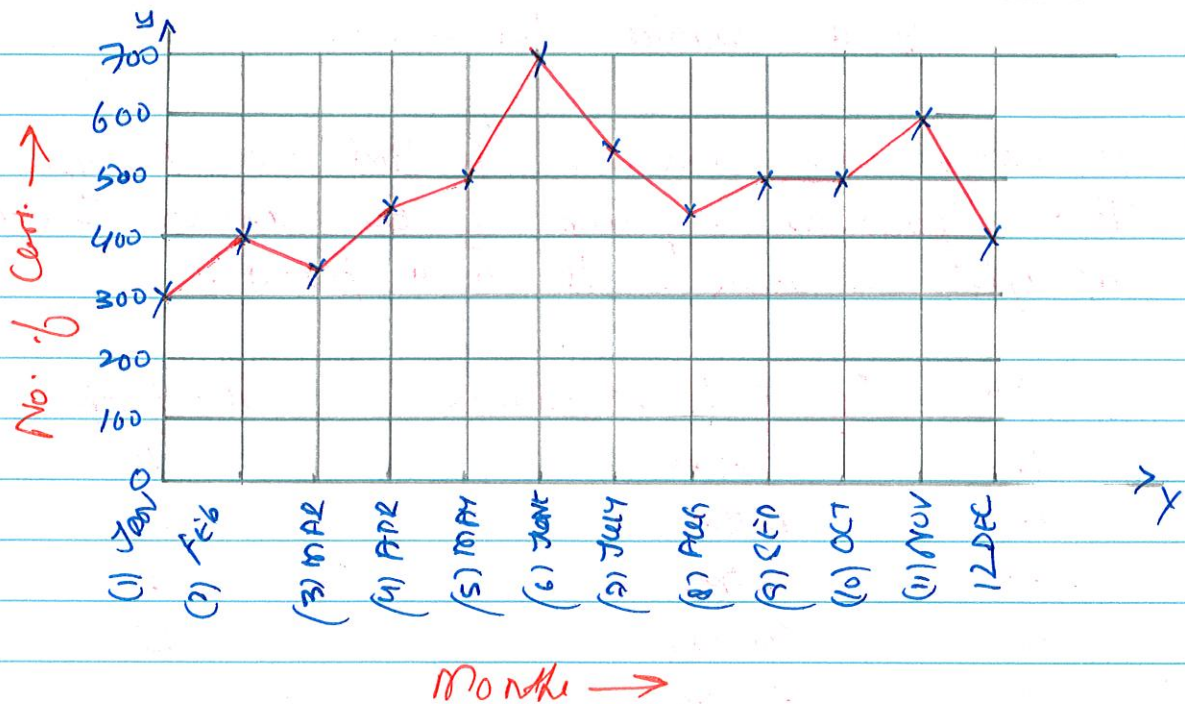
6) An integer is chosen at random from the first 50 positive integers. What is the probability that the chosen integer is divisible by 5?

7) Following data represent the time spent by a child during a day.

Sleep	School	Home work	Play	Other
8 hrs	6 hrs	4 hrs	4 hrs	2 hrs

Represent the above data in the form of Pie chart.

8) Given below is the graph of sales of cars by the company 'Diamond Motor Limited'.



Answer the following:

- What is the scale used on Y-axis?
- Which month recorded the peak sales?
- In which months were the sales equal?
- What was the number of cars sold in the month of May?

9) The marks obtained in mathematics by 40 students of a class in an examination are:

3 20 13 1 21 13 3 23 16 3 13 5 24 15 7  
 10 18 18 7 17 21 15 5 23 2 12 20 2 10  
 16 23 18 12 6 9 7 3 5 16 8 and 8.

- Present the data in the form of a grouped frequency distribution, using class intervals of equal size, one of the class intervals being 5-10.
- Draw histogram for above frequency table.

10) When a die is thrown, find the probability of getting (a) a prime number  
(b) a number less than 6.

11) A survey was conducted to find out the type of T.V. programs a group of 60 children watched through a week. It is as follows:

S.No.	Type of TV Programme	No. of children
1.	Drama	10
2.	Action	15
3.	Fiction	5
4.	Comedy	15
5.	Romance	9
6.	Horror	6

Draw a pie chart to represent this information.

12) The water tax bills of 30 houses in locality are given below. Construct a grouped frequency distribution table with class size 20 and answer the following questions.

30 32 45 114 74 78 108 112 66 76  
88 40 14 20 15 35 44 66 75 84  
95 96 102 110 88 74 112 14 34 44

(a) Which class has the lowest frequency?

(b) What is the upper limit of the class interval 90-110

(c) What is the range of the above tax bills?